

Lamp Type: GIA1554T9VHCA/2S19/4C

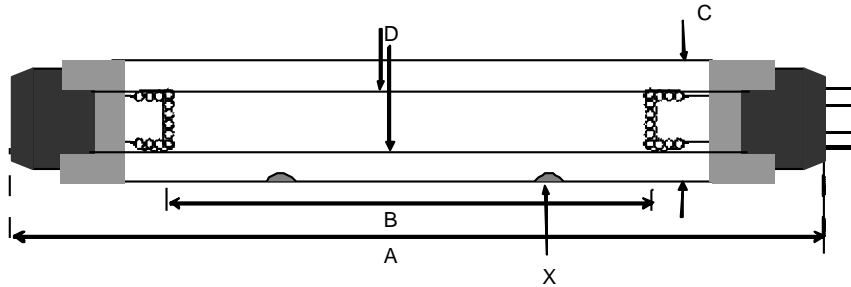
Spec Number:

Engineering Specification Sheet

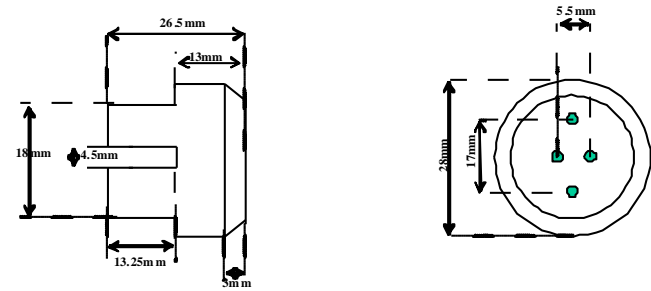
2927

**Lamp Diagram:**  
Wedeco 32143/4P

Tolerance: +/-3mm



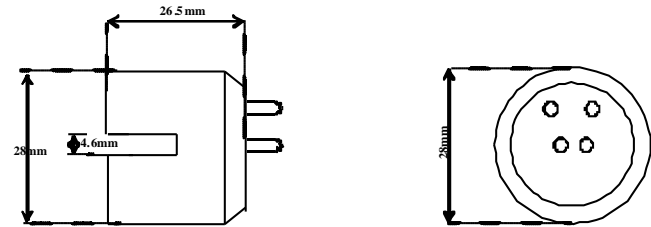
**Left Base Diagram:**  
A208-12-C00 Four Pin Base White w/o Pins



Material: Aluminum - White

**Right Base Diagram:**

208-CB-041 Offset Four Pin Base  
208-PC-041 Offset Four Pin Base Provided with Vendor Pin



Material: Aluminum - White

**Lamp Characteristics**

(A) Base Face:	1554	mm	+/-3		
(B) ARC:	1483			Operating Current	3.8a
(C) Bulb Diameter	28			Lamp Voltage	92v
(X) amalgam				Lamp Wattage	350w
Glass Type:	VH (Ozone)	Coating:	A11-QC-001		
<b>If Spliced:</b>	L	mm	VH	mm	
	(Y)				



**UV Output - Certified to be true. Kenneth A. Ell, President**

Output UVC Watts	micro/watt	/cm <sup>2</sup> @ 1 Meter	Rated Life (hrs)	% Output @EOL	Output Notes Field	Ballast Used for Measurements
125		950	12000	80.00%		03-EB-238

**First Light**  
212 Ideal Way  
Poultney, VT 05764 USA  
Phone-(802) 287-4195 Fax-(802) 287-4489  
www.firstlightusa.com  
email: sales@firstlightusa.com

\*UV Output is based on lamps measured after 100 hours of operation under lab conditions. These values are subject to wide variations under application/field conditions.  
\*\*\*UV Output is measured at 254 nm\*\*\*  
\*\*Rated Life is for reference purposes only and is based on a group of lamps operating under lab conditions. Actual life depends on the operating conditions of the lamp.

8/10/2016  
9:32:16 AM

This data includes matters which are trade secrets of First Light Technologies, Inc., or Proprietary or Confidential to First Light Technologies, Inc. and shall not be reproduced or disclosed in whole or part, or used in any manner except in connection with First Light Technologies, Inc. business, without the written permission of First Light Technologies, Inc.